

EXOTIC WEAPONS OF HÂRN

By Bill Gant, August 1993

The following lists some of the more exotic weapons that are occasionally found in Hârn.

BALLISTA

Siege weapon such as the kind defending Tarien Wharf in the city of Tháy. It shoots heavy arrows and, with the proper modifications, stones as well. The Ballista resembles a crossbow to some extent, although the arms are not connected. Each arm has a skein of twisted cords attached to it. The javelin-like arrows shot from a typical Ballista weigh about 9 lbs and have a flat-trajectory range of about 360-400 yards.

A Ballista is operated by a three-man crew:

- *Aimer* (DEX EYE INT [Ûlândus/Arálius +2, Fenéri +1] OML SB1);
- *Loader* (STR END DEX [Ûlândus/Arálius +2] OML SB1);
- *Gunner* (STR DEX EYE [Hîrin/Ûlândus/Fenéri +1] OML SB1).

The three men's skills are *averaged* to determine the success level of the siege engine. A Ballista has an average rate of fire of one shot every 3 minutes (add a further +1 minute or +3 minutes for MF/CF).

Weapon	Group	WT	WQ	A/D	Pr	Se	B	E	P	Make	Price
Ballista	Siege	300	14	-/-	-	-	-	-	Var.	240d 720	1200d

Ammunition cost: 30d per Ballista arrow.

Range	4/Less	8/Less	16/Less	32/Less	64/Less	128/Less	256/Less
EML	+20	+15	+5	+0	-10	-20	-60
Impact	18	18	17	16	14	12	10

Because the Ballista relies on torsion from the twisted cords to provide power, it is very susceptible to dampness. Rain or very humid conditions can cause the skeins to slacken and render the machine useless.

CHACING STAFF



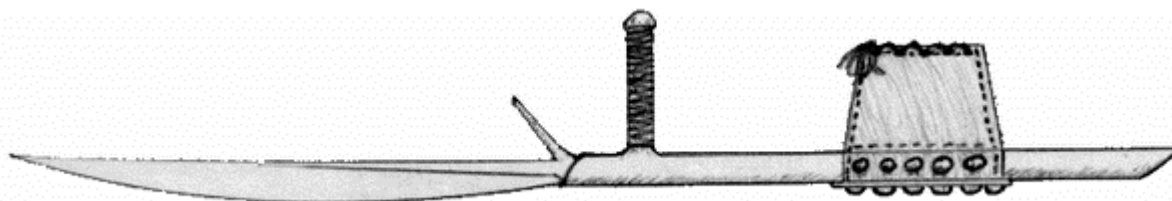
A 12-foot long iron-shod staff used by robbers in the Hefiosa Highlands, the Thârdic Republic's most rugged and mountainous region, an area totally controlled by numerous groups of brigands.

Weapon	Group	WT	WQ	A/D	Pr	Se	B	E	P	Make	Price
Chacing Staff (c)	Polearm	7	12	5/1	20	35	5	-	-	15d 18	42d

STR DEX DEX (Arálius +2; Ûlândus +1) OML SB2

The Chacing Staff is an 'L' class weapon, capable of attacking opponents 2 hexes away. Opponents in adjacent hexes may be attacked but the wielder must fight with a Close Mode penalty. Because of its long reach, the Chacing Staff is often used to unhorse mounted opponents.

FLETHAR'S PIT BLADE



An exotic 36" close combat weapon. It is essentially a 3" wide, 20" long hardened wood rod with a tapering 16" curved blade at one end. Perpendicular to the rod is a handle, and further back is a thick leather forearm strap. The handle is gripped and the weapon strapped to the wielder's forearm so that the rod runs parallel and underneath the hand, forearm and elbow. Flethar's Pit Blade is used with short, sharp slashing attacks or sudden thrusts, and the rod may be used to block incoming blows. This weapon combines good close-range attack and defence abilities to create a highly effective melee weapon in the confines of a fighting pit.

Weapon	Group	WT	WQ	A/D	Pr	Se	B	E	P	Make		Price
Pit Blade	Unarmed	2	11	2/3	-	05	2	3	5	8d	40	56d

STR DEX DEX (Áhnù/Nadáí +1)

OML SB3

NAGAMAKI

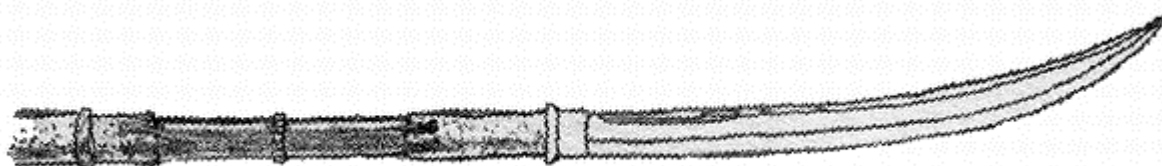


A bladed staff from Shóju with a 33" long, tanged blade mounted on a long handle with guard.

Weapon	Group	WT	WQ	A/D	Pr	Se	B	E	P	Make		Price
Nagamaki	Polearm	6	12	4/2	20	35	5	7	7	18d	60	90d

STR DEX DEX (Angberélius/Arálius +1) OML SB2

NAGINATA



A polearm from Shóju with a 20" long sword-like blade. It is essentially a long-bladed spear.

Weapon	Group	WT	WQ	A/D	Pr	Se	B	E	P	Make		Price
Naginata	Polearm	6	12	5/1	20	30	5	6	7	15d	40	65d

STR DEX DEX (Angberélius/Arálius +1) OML SB2